

Concert Quick Guide®

Before & After Soviet Communism

THU 5/4/23 at 7 PM

Performance #238 Season 8, Concert 28
Stern Auditorium / Perelman Stage at Carnegie Hall

Get to know TŌN percussionist Petra Elek at
ton.bard.edu/TONtube

LEON BOTSTEIN conductor

CONCERT TIMELINE

2 hours and 10 minutes



Brief remarks by Petra Elek *percussion*



Karol Szymanowski

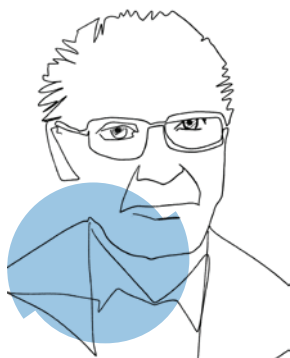
Born 10/3/1882 in Tymoszwówka, near Kiev, Ukraine
Died 3/29/1937 at age 54 in Lausanne, Switzerland

Songs of the Infatuated Muezzin

Allah, Allah, Akbar... 3 min
W południe miasto białe od gorąca...
(At noon the city is white with heat) 3 min
O tej godzinie, w której miasto śpi...
(At this hour when the city sleeps) 3 min
Odeszłaś w pustynię zachodnią...
(You departed for the western deserts) 3 min

SUN-LY PIERCE VAP '19 *mezzo-soprano*

Written 1918, at age 35; orchestrated in 1934
Piano Version Premiered 1/17/1922 in Lviv,
Ukraine; Stanisława Korwin-Szymanowska
soprano, Edward Steinberger *piano*



György Kurtág

Born 2/19/1926 in Lugoj, Romania

...concertante...

PART 1 ...fantasia...
Senza tempo—Sostenuto, parlando, pulsato 5 min
Vivo, agitato—Recitativo 6 min
Choral—Ricapitulazione 5 min
PART 2 ...coda: recitativo ed epilogo...
Recitativo 2 min
...epilogo... 5 min

LUOSHA FANG '10 *violin*

ROSEMARY NELIS '17 *viola*

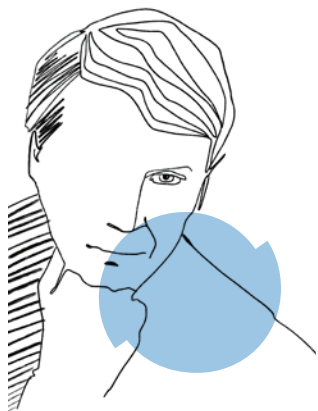
Written 2002–03, in Kurtág's mid 70s
Premiered 2003 in Copenhagen; Danish Radio
Symphony Orchestra; Hiromi Kikuchi *violin*,
Ken Hakii *viola*, Michael Schonwand *conductor*

Intermission

SHARE A PHOTO @TheOrchNow #TheOrchNow

REFRESHMENTS available at the café on the Parquet level

RESTROOMS located on the Parquet, Blavatnik Family First Tier (outside of the Rose Museum), Second Tier, and Dress Circle levels



Boris Tishchenko

Born 3/23/1939 in Leningrad

Died 12/9/2010 at age 71 in St. Petersburg

Symphony No. 5

Prelude *10 min*

Dedication *8 min*

Sonata *6 min*

Interlude *10 min*

Rondo *11 min*

Written 1976, at age 37

All timings are approximate.

Thursday Evening, May 4, 2022, at 7:00
Isaac Stern Auditorium / Ronald O. Perelman Stage



presents

Before & After Soviet Communism

LEON BOTSTEIN, *Conductor*

Performance #238: Season 8, Concert 28

- KAROL SZYMANOWSKI (1882–1937) Songs of the Infatuated Muezzin (1918, orch. 1934)
Allah, Allah, Akbar...
W południe miasto białe od gorąca...
O tej godzinie, w której miasto śpi...
Odeszłaś w pustynię zachodnią...
SUN-LY PIERCE VAP '19, *Mezzo-soprano*
- GYÖRGY KURTÁG (b. 1926) ...concertante... (2002–03)
PART 1 ...fantasia...
Senza tempo—Sostenuto, parlando, pulsato
Vivo, agitato—Recitativo
Choral—Ricapitulazione
PART 2 ...coda: recitativo ed epilogo...
Recitativo
...epilogo...
LUOSHA FANG '10, *Violin*
ROSEMARY NELIS '17, *Viola*

Intermission

- BORIS TISHCHENKO (1939–2010) Symphony No. 5 (1976)
Prelude
Dedication
Sonata
Interlude
Rondo

This evening's concert will run approximately 2 hours and 10 minutes.

PLEASE SWITCH OFF YOUR CELL PHONES AND OTHER ELECTRONIC DEVICES.

Notes ON THE MUSIC

KAROL SZYMANOWSKI'S SONGS OF THE INFATUATED MUEZZIN

Notes by Sebastian Danilla

During World War I the music of Karol Szymanowski took a decidedly intense stylistic shift. Gone was the late-Romantic tone of his earlier works, with its dense orchestral polyphony and highly chromatic idiom, abandoned now in favor of the lush colors and opulent sonorities of the modern French and Russian music. Szymanowski's enthusiasm for composers like Debussy, Ravel, and Scriabin, coupled with his lifelong passion for Greek and Oriental antiquity, opened entirely new aesthetic perspectives for him. The resultant language—bolder harmonically, texturally more voluptuous than anything he had attempted before—announced triumphantly the emergence of a distinctive voice of a now fully mature composer.

Szymanowski's song-cycle *Pieśni muezzina szalonego* ("Songs of the Infatuated Muezzin") consists of six songs for voice and piano to a text by his distant cousin, Jarosław Iwaszkiewicz. Much later, towards the end of his life, Szymanowski orchestrated four of these songs (Nos. 1, 4, 5, and 6 of the original cycle), in what proved to be one of his last creative acts.

The "Muezzin" songs represent perhaps the high point of his fascination with exoticism. His imagination fired by extended visits in Italy, Greece, and North Africa, Szymanowski developed a world in which dream and fantasy coexisted in a luxurious landscape

of exotic imagery. What distinguishes this music from other, more "clichéd" explorations of orientalist subject matter (like Ravel's *Shéhérazade*) is the unabashedly erotic overtone. From the opening song, the muezzin—the person calling the Muslims to prayer in a mosque—is portrayed as conflicted between religious duty and erotic desire for his "beloved." The constantly changing meters highlight the tension, the sense of inner turmoil. In the following song the eroticism becomes more pronounced, with the protagonist musing over the naked body of his beloved. The repeated sixteenth-note patterns in the accompaniment are highly suggestive of this obsessive desire for her, an obsession that culminates in the final song with the same body now buried in the desert sand, in what is arguably a compelling illustration of an oriental version of *Liebestod*. Tellingly, this is the only song in the cycle in which Allah's name is not mentioned, reinforcing the muezzin's complete immersion in hedonistic pursuits.

The "Muezzin" songs are a crystallization of the aesthetic forces that define Szymanowski's mature style: richly orchestrated, with an adventurous, yet sensual harmonic language, in which non-tonal symmetries predominate; testimonials that at least this work is worthy of a central place in the repertoire, far from the periphery it is currently relegated to.

GYÖRGY KURTÁG'S ...concertante...

Notes by TÖN trombonist Stephen Whimple

The Composer

György Kurtág is known for his highly expressive and intense musical style, and for his innovative use of musical form and structure. His music is characterized by its economy of means, with each note and gesture carefully crafted for maximum impact. His works range from solo pieces to large-scale orchestral works, and are often marked by a sense of intimacy and introspection. Kurtág's music has received numerous awards and honors, yet he is known for his modesty and self-effacing demeanor, and has often spoken of his music as a form of personal expression rather than a means of public acclaim. The Orchestra Now is grateful to have the opportunity to present this work as our own personal encore to Bard College's annual Kurtág festival, "Signs, Games, and Messages."

A Different Kind of Concerto

Kurtág's ...concertante... is a different kind of concerto on a multitude of levels. While you may not walk away whistling any of the melodies played by the soloists, you will see the technical and expressive natures of these instruments pushed to their limits. This piece explores soundscapes created by the soloists and a rather large orchestra, featuring around twenty different percussion instruments in the back row! This concerto is performed as a singular uninterrupted work with several sections, rather than individual movements.

The Music

The first section, ...fantasia..., opens with the soloists meditating on a con-



MATT DINE

cert G before the orchestra introduces the colors it will be providing for the work. While the soloists elaborate on their singular note, bring your ear to what instruments stand out to you. The use of orchestration from here on out should be very interesting. This section grows dynamically and in intensity to the *Vivo*, *agitato*, in which Kurtág showcases his command over rhythmic complexity. The middle movement is a lyrical interlude featuring more lush sounds. The coda begins with more eccentric brass writing, leading into the ...epilogo..., a conclusion that fits the piece from the tone set in the beginning.

It's All Amazing

We do not always have the opportunity to play works in this style, but when we do, it is some of my favorite music that we get to make on stage. To me, one of the many beauties of music is its incredible range in complexity. From pop songs we listen to on the radio, to this, it's all amazing, we just get to figure out how and why.

BORIS TISHCHENKO'S SYMPHONY NO. 5

Notes by TÖN cellist Emma Churchill



The Composer

Russian composer Boris Tishchenko was born in Leningrad, where he studied both composition and piano at Leningrad Musical College and the Leningrad Conservatory. He went on to do a postgraduate course with Dmitri Sostakovich from 1962–65; this symphony is dedicated to his beloved teacher. Completed in 1976, it is said to represent Tishchenko's reaction to Shostakovich's death in 1975.

The Music

Written in five movements, Tishchenko's use of chromatic dissonance makes his pain very vivid to the audience. The first movement opens with a long, pensive English horn solo which lasts almost three minutes before the orches-

tra quickly interjects with dissonant chords before going into another woodwind solo, this time by the clarinet. Again, the orchestra comes in with the familiar dissonant chords before a duet between the flute and clarinet. As other wind and brass instruments begin to join in they bring us back to full orchestra, which is when the symphony really takes off. In the second movement you can hear the grief and heartache which leads right into the third movement, Sonata. Here you can hear the relationship between Tishchenko and Shostakovich, with quotes of Shostakovich's 8th and 10th Symphonies. It's as if we're present for a conversation between the two composers. The climax of the third movement is explosive, in my opinion a combination of anger and heartache. We are brought back to a painful sounding fourth movement which opens with trills in the winds and glissandi in the strings. There are wind, brass, and string solos sprinkled throughout this movement before a clarinet solo brings us into the fifth and final movement, Rondo. It has a dance-like quality in the opening, with quotes from previous movements by both composers which are heard throughout the movement before the flute and piccolo bring us to a calm end after a chaotic emotional storm.

Text AND TRANSLATION

Songs Of The Infatuated Muezzin

Libretto by Jarosław Iwaszkiewicz, extracted from his "Namiętny Muezzin"

I.

*Allah, Allah, Akbar, Allah!
Ja wiem, ja dobrze wiem, że ciebie
stworzył Allah bym jego chwalił,
Bo czyż nie mając ciebie byłbym
Szalonym Muezzinem?*

*Bo czyżbym wysyłał w niebo głos
wychwalający Allaha,
nie myśląc że dźwięk jego zbudzi ciebie!*

Allah, Akbar, Allah!

II.

*W południe miasto białe od gorąca,
Baseny pluszczą wilgotną zielenią.
Wzywam na chwałbę Allaha po to
jedynie,
byś do kąpieli zdziła szaty barwne.*

*Wezwanie moje codziennie sprawia cud, cud
twojej nagości!*

III.

*O tej godzinie w której miasto śpi, o
olali! o olali!
Zbudźcie się chwalić Allaha!
Wstań stary kupcze, by chwalić Allaha A!
Licząc swe perły.
Wstań ty niewiasto, by chwalić Allaha,
czekając na junaka.
Tylko ty o luba utulona snem, o olali! o
olali!
Jak lotus śpij skulona.*

IV.

*O olio, o olio! Odeszłaś w pustynię
zachodnią!
nie zna kroperek srebrnych wód.
W suchych piaskach swe ciało w
zachodniej nurzasz pustyni,
i serce moje piasek rozłąki.
Miał wody słodkiej kochania pije! O
olio! O olio.*

Allah, Allah, Akbar, Allah!
I know, yes, I know Allah created you so
that I could praise him,
for without you would I be the Infatuated
Muezzin?

Would I send my voice towards the heav-
en praising Allah
without thinking its sound would some-
how awaken you!
Allah, Akbar, Allah!

At noon the city is white with heat,
The pools ripple with wet green.
I raise the call to glorify Allah only so

you'd take off your colorful robes to
bathe.

My call every day brings a miracle,
the miracle of your nakedness!

At this hour when the city sleeps, o olali!
o olali!

Awake thus to praise Allah!
Rise, old merchant, to praise Allah! ah!
counting your pearls.

Rise woman, to praise Allah, awaiting
your young lover.
Only you, oh beloved, nestled in dreams,
o olali! o olali!
Sleep curled like a lotus flower.

O olio, o olio! You departed for the
western deserts!
the drops of silvery waters.
In dry sands of the western desert you
immerse your body,
and my heart drinks desert sand
Instead of the sweet water of loving! O
olio, O olio!

THE Artists

LEON BOTSTEIN, *Conductor*

MATT DINE



Leon Botstein is founder and music director of The Orchestra Now (TÖN), music director and principal conductor of the American Symphony Orchestra (ASO), artistic codirector of Bard SummerScape and the Bard Music Festival, and conductor laureate and principal guest conductor of the Jerusalem Symphony Orchestra (JSO), where he served as music director from 2003 to 2011. He has been guest conductor with the Los Angeles Philharmonic, Royal Philharmonic Orchestra, Aspen Music Festival, Buffalo Philharmonic Orchestra, Mariinsky Theatre, Russian National Orchestra in Moscow, Hessisches Staatstheater Wiesbaden, Taipei Symphony, Simón Bolívar Symphony Orchestra, and Sinfónica Juvenil de

Caracas in Venezuela, among others. In 2018, he assumed artistic directorship of Campus Grafenegg and Grafenegg Academy in Austria.

Recordings include acclaimed recordings of Othmar Schoeck's *Lebendig begraben* with TÖN, Hindemith's *The Long Christmas Dinner* with the ASO, a Grammy-nominated recording of Popov's First Symphony with the London Symphony Orchestra, and other various recordings with TÖN, ASO, the London Philharmonic, NDR Orchestra Hamburg, and JSO, among others. He is editor of *The Musical Quarterly* and author of numerous articles and books, including *The Compleat Brahms* (Norton), *Jefferson's Children* (Doubleday), *Judentum und Modernität* (Böhlau), and *Von Beethoven zu Berg* (Zsolnay). Honors include Harvard University's prestigious Centennial Award; the American Academy of Arts and Letters award; and Cross of Honor, First Class, from the government of Austria, for his contributions to music. Other distinctions include the Bruckner Society's Julio Kilenyi Medal of Honor for his interpretations of that composer's music, the Leonard Bernstein Award for the Elevation of Music in Society, and Carnegie Foundation's Academic Leadership Award. In 2011, he was inducted into the American Philosophical Society.

LUOSHA FANG '10, *Violin*

VANESSA BRICENO



Violinist and violist Luosha Fang has performed as a violin soloist with the Saint Paul Chamber Orchestra, Louisville Orchestra, and the American, Atlantic, West Virginia, and Bay-Atlantic Symphonies. She recorded George Tsontakis's double violin concerto *Unforgettable* with the Albany Symphony Orchestra for release on Naxos Records. As a violist she has performed as soloist with the New Japan Philharmonic, Nagoya Philharmonic Orchestra, TOHO-Gakuen Orchestra, Franz Liszt Chamber Orchestra, and the Hiroshima and Slovak Radio Symphony Orchestras.

Ms. Fang is a winner of international competitions on both instruments, including the 2019 Classic Strings International Competition in Vienna and the 2018 Tokyo International Viola Competition. She was a winner of Astral Artists' 2013 National Auditions and the S&R Foundation's 2015 Washington Award, as both violinist and violist. She has played in

the Marlboro, Krzyzowa, Kronberg, Ravinia, Festspiele Mecklenburg-Vorpommern, Bard Music, Caramoor, Aspen, Music from Angel Fire, and Incontri in Terra di Siena Festivals. During 2021 and 2022 she was violist of the Pavel Haas Quartet in Prague, with whom she recorded works by Brahms.

Ms. Fang has performed at such prestigious venues as Carnegie Hall, the Kennedy Center, the Library of Congress, Kioi Hall in Tokyo, De Bijloke in Gent, the Graz and Vienna Musikvereins, the Elbphilharmonie in Hamburg, the Meistersingerhalle in Nuremberg, the Konzerthaus in Berlin, the Muzikgebouw in Amsterdam, Wigmore Hall in London, the Auditorio Nacional de Música in Madrid, the Flagey Piano Days in Brussels, and the East Neuk Festival in Scotland.

After graduating from the Bard College Conservatory of Music with degrees in violin and Russian Studies, she attended the Curtis Institute of Music. In 2016 she entered the Escuela Superior de Música Reina Sofía in Madrid as a viola student. In Fall 2019 she was invited to teach at the Bard College Conservatory of Music as instructor of violin/viola.

Ms. Fang has also collaborated with the Almanac Dance Circus Theatre and the Bill T. Jones/Arnie Zane Dance Company. She studied acting and theater at Bard College and the University of Pennsylvania. She plays on a Pietro Guarneri violin made in 1734 and a Dominique Peccatte bow kindly loaned by Dr. Ryuji Ueno.

ROSEMARY NELIS '17, *Viola*

EVA RAVEL



Violist Rosemary Nelis has performed as chamber musician and soloist throughout the United States and Europe. She has spent her career as a champion of contemporary music, working with composers including Missy Mazzoli, David Lang, Christine Southworth, Dan Visconti, Andy Akiho, Kenji Bunch, Don Byron, James MacMillan, Brett Dean, Yu-Hui Chang, Jörg Widmann, and Joan Tower. In January of 2022 she became the newest member of the New York-based Cassatt String Quartet, with whom upcoming projects include recordings and major

performances of works by Victoria Bond, Rebecca Clarke, Shirish Korde, Tania León, Sato Matsui, Dorothy Rudd Moore, Fanny Mendelssohn, and Florence Beatrice Price.

Ms. Nelis received both Bachelor of Music and Bachelor of Arts degrees from Bard College and the Bard Conservatory of Music, where she studied with Steven Tenenbom and majored in Chinese Language and Literature. She was the proud recipient of a Kovner Fellowship during her Masters studies at The Juilliard School, where she worked with Roger Tapping and Misha Amory. She also studied at the University of Glasgow, Qing Dao University, and Yale School of Music, working with violists Duncan Ferguson and Ettore Causa. Ms. Nelis has spent summers performing chamber music at Yellow Barn, Bard Music Festival, and Kneisel Hall. In 2022 she served as faculty at the Kinhaven Music School, and is currently a professor of viola at the Cali School of Music at Montclair State University.

Ms. Nelis plays on a 1991 viola made by the Brooklyn-based maker Samuel Zygmuntowicz.

SUN-LY PIERCE VAP '19 *Mezzo-soprano*

DARRO ACOSTA



During the 2022-23 season, Chinese-American mezzo-soprano Sun-Ly Pierce returns to Houston Grand Opera to sing the role of Jack and cover Thirza in Dame Ethel Smyth's opera *The Wreckers*. She will also make role and house debuts with Calgary Opera as Laurene Powell in *The (R)evolution of Steve Jobs* led by Michael Christie; Opera Philadelphia as Emilia in Rossini's *Otello* with conductor Corrado Rovaris; and Detroit Opera as Arsamene in *Xerxes* under the baton of Dame Jane Glover. In concert, she will perform Mozart's Requiem with the Houston Symphony conducted by Itzhak Perlman; Szymanowski's Songs of the Infatuated Muezzin with The Orchestra Now at the Fisher Center at Bard and Carnegie Hall; as well as a pair of recitals for Lyric Fest in Philadelphia.

Last season, Ms. Pierce debuted four new roles on stage at Houston Grand Opera: Stéphanie in *Roméo et Juliette*; singing Sister Mathilde and cover Blanche

de la Force in *Dialogues des Carmélites*; Second Lady in *Die Zauberflöte*; and Mercédès in *Carmen*. Additional appearances included reviving her portrayal of Mozart's Second Lady for Des Moines Metro Opera; joining the Aspen Music Festival in a role debut as Donna Elvira in *Don Giovanni* and mezzo-soprano soloist in concerts of Mendelssohn's *A Midsummer Night's Dream* and Druckman's *Dark Upon the Harp*; and made her San Francisco Opera debut as Bao Chai in Bright Sheng's *Dream of the Red Chamber* with the San Francisco Opera.

In 2020, Ms. Pierce was first place winner of the Eleanor McCollum Competition for Young Singers and was selected as a Keston MAX Fellows which were to perform with the London Symphony Orchestra and Sir Simon Rattle before the pandemic forced its cancellation. The previous year she was a semi-finalist in the Kurt Weill Foundation's Lotte Lenya Competition and a Vocal Fellow at Academy of the West. She was selected as an Encouragement Winner of the New England Region of the Metropolitan Opera National Council Auditions in 2021.

A native of Clinton, New York, Ms. Pierce holds a Bachelor of Music in Vocal Performance degree from the Eastman School of Music and is an alumni of the Graduate Vocal Arts Program at Bard College Conservatory of Music, where she studied under the tutelage of Dawn Upshaw, Kayo Iwama, and Erika Switzer.



György Kurtág was born in Lugoj, Romania in 1926. From 1940 he took piano lessons from Magda Kardos and studied composition with Max Eisikovits in Timisoara. Moving to Budapest, he enrolled at the Academy of Music in 1946, where his teachers included Sándor Veress and Ferenc Farkas (composition), Pál Kadosa (piano), and Leó Weiner (chamber music). In 1957–58 he studied in Paris with Marianne Stein and attended the courses of Messiaen and Milhaud. As a result, he rethought his ideas on composition and marked the first work he wrote after his return to Budapest, a string quartet, as his opus 1.

In 1958–63 Mr. Kurtág worked as a répétiteur with the Béla Bartók Music Secondary School in Budapest. In 1960–80 he was répétiteur with soloists of the National Philharmonia. From 1967 he was assistant to Pál Kadosa at the Academy of Music, and the following year he was appointed professor of chamber music. He held this post until his retirement in 1986 and subsequently continued to teach at the Academy until 1993.

With increased freedom of movement in the 1990s, Mr. Kurtág worked increasingly outside Hungary, as composer in residence with the Berlin Philharmonic (1993–94), with the Vienna Konzerthaus (1995), in the Netherlands (1996–98), in Berlin again (1998–99), and a Paris residency at the invitation of the Ensemble Intercontemporain, Cité de la Musique and the Festival d'Automne.

Mr. Kurtág won the prestigious 2006 Grawemeyer Award for Music Composition for his ...concertante.... His opera *Fin de Partie*, based on Samuel Beckett's play, was premiered by La Scala Milan in 2018 and was acclaimed as his magnum opus.

THE ORCHESTRA NOW

DAVID DENNE



The Orchestra Now (TÖN) is a group of vibrant young musicians from across the globe who are making orchestral music relevant to 21st-century audiences by sharing their unique personal insights in a welcoming environment. Hand-picked from the world's leading conservatories—including the Yale School of Music, Shanghai Conservatory of Music, Royal Academy of Music, and the New England Conservatory of Music—the members of TÖN are enlightening curious minds by giving on-stage introductions and demonstrations, writing concert notes from the musicians' perspective, and having one-on-one discussions with patrons during intermissions.

Conductor, educator, and music historian Leon Botstein, whom *The New York Times* said “draws rich, expressive playing from the orchestra,” founded TÖN in 2015 as a graduate program at Bard College, where he is also president. TÖN offers both a three-year master's degree in Curatorial, Critical, and Performance Studies and a two-year advanced certificate in Orchestra

Studies. The orchestra's home base is the Frank Gehry-designed Fisher Center at Bard, where it performs multiple concerts each season and takes part in the annual Bard Music Festival. It also performs regularly at the finest venues in New York, including Carnegie Hall, Lincoln Center, The Metropolitan Museum of Art, and others across NYC and beyond. *HuffPost*, who has called TÖN's performances “dramatic and intense,” praises these concerts as “an opportunity to see talented musicians early in their careers.”

The orchestra has performed with many distinguished guest conductors and soloists, including Leonard Slatkin, Neeme Järvi, Gil Shaham, Fabio Luisi, Vadim Repin, Hans Graf, Peter Serkin, Gerard Schwarz, Tan Dun, and JoAnn Falletta. Recordings featuring The Orchestra Now include two albums of piano concertos with Piers Lane on Hyperion Records, and a Sorel Classics concert recording of pianist Anna Shelest performing works by Anton Rubinstein with TÖN and conductor Neeme Järvi. *Buried Alive* with baritone Michael

Nagy, released on Bridge Records in August 2020, includes the first recording in almost 60 years—and only the second recording ever—of Othmar Schoeck’s song-cycle *Lebendig begraben*. Recent releases include *Classics of American Romanticism*—featuring the first-ever complete recording of Bristow’s *Arcadian Symphony*—and an album of piano concertos with Orion Weiss, both on Bridge Records, and

the soundtrack to the motion picture *Forté*. Recordings of TÖN’s live concerts from the Fisher Center can be heard on Classical WMHT-FM and WWFM The Classical Network, and are featured regularly on Performance Today, broadcast nationwide.

Explore upcoming concerts, see what our musicians have to say, and more at ton.bard.edu.

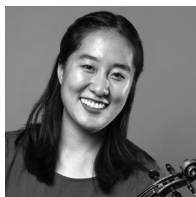
THE ORCHESTRA NOW

Leon Botstein, *Music Director*

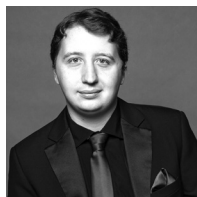
Violin I	Cello	Jarrett Hoffman Bass	Tuba
Yi-Ting Kuo	Amelia Smerz <i>Principal</i>	<i>Clarinet</i>	Vivian Kung
<i>Concertmaster</i> ^{1,2}	Emma Churchill		<i>Cimbasso</i> ³
Adam Jeffreys	Jihyun Hwang	Bassoon	Joe Exley
<i>Concertmaster</i> ³	Sam Boundy	Philip McNaughton	
Samuel Frois	Eva Roebuck	<i>Principal</i> ¹ ,	Timpani
Jonathan Fenwick	Lucas Button TÖN '21	<i>Contrabassoon</i> ³	Keith Hammer III
Judith Kim	Anita Balázs	Han-Yi Huang	
Mae Bariff	Chris van Zyl IAP '24	<i>Principal</i> ^{2,3}	Percussion
Nayoung Kim		Briana Hoffman	Petra Elek <i>Principal</i> ¹
Lana Auerbach	Bass		Matthew Overbay
Zhen Liu	Rowan Puig Davis	Horn	APS '22 <i>Principal</i> ²
Nalin Myoung APS '23	<i>Principal</i>	Zachary Travis	Taylor Lents <i>Principal</i> ³
Madeline Hocking	Zack Merkovsky	<i>Principal</i> ¹	Felix Ko
Bruno Pena	Kiefer Fuller	<i>Principal</i> ²	Esteban Ganem IAP
	Luke Stence TÖN '22	Kenshi Miyatani	'24
	John Woodward IAP	Tori Boell <i>Principal</i> ³	Jonathan Collazo '19
Violin II	'24	Kwong Ho Hin	APS '24
Enikő Samu <i>Principal</i>		Stefan Williams	Dániel Matei '19
Julián Andrés Rey	Flute	Steven Harmon TÖN	Colleen Bernstein
Peñaranda	Jordan Arbus	'22	
Yeseul Park	<i>Principal</i> ^{1,3}	Emily Buehler TÖN	Harp
Angeles Hoyos	Jillian Reed '21	'21 <i>Assistant</i>	Cheng Wei (Ashley)
Yuna Jo	<i>Principal</i> ²		Lim
Zeyi Sun	Chase McClung	Trumpet	
Hannah Lynn Cohen	Leanna Ginsburg	Maggie Tsan-Jung	Keyboards
Maya Lorenzen	TÖN '22	Wei <i>Principal</i> ¹	Ji Hea Hwang <i>Piano</i> ,
Michael Hahn	Danielle Maeng	Forrest Albano	<i>Piano</i>
Adrienne Harmon		<i>Principal</i> ^{2,3}	Bethany Pietroniro
		Angela Gosse	<i>Celeste</i>
Viola	Oboe	Diana Lopez*	
Batmyagmar	Shawn Hutchison		Cimbalom
Erdenebat <i>Principal</i>	<i>Principal</i> ^{1,2}		Chester Englander
Shek Wan Li	JJ Silvey <i>Principal</i> ³	Trombone	
Hyunjung Song	Jasper Igusa	Christopher Paul	
Sydney Link	<i>English Horn</i>	<i>Principal</i>	
Kyle Davis		Hitomi Yakata	¹ <i>Szymanowski</i>
Karen Waltuch	Clarinet	Stephen Whimple	² <i>Kurtág</i>
Kathleen Bosman	Olivia Hamilton	<i>Bass Trombone</i>	³ <i>Tishchenko</i>
Keegan Donlon	<i>Principal</i> ¹	Samuel Boeger*	* <i>not performing in this concert</i>
	Colby Bond		
	<i>Principal</i> ^{2,3}		
	Mackenzie Austin		
	<i>E-flat Clarinet</i>		

CONGRATULATIONS TO OUR Musicians

2023 graduates receiving a Master of Music Degree in Curatorial, Critical, and Performance Studies



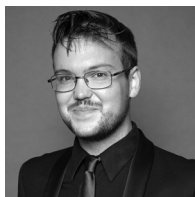
Linda Duan
violin



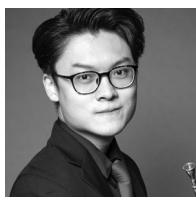
Keith Hammer III
timpani



Jasper Igusa
oboe



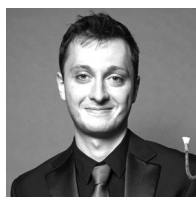
Adam Jeffreys
violin



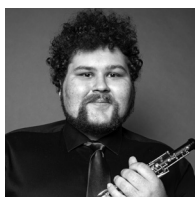
Kwong Ho Hin
horn



Zhen Liu
violin



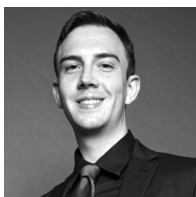
Philip McNaughton
bassoon



JJ Silvey
oboe



Hyunjung Song
viola



Zachary Travis
horn



Maggie Tsan-Jung
Wei
trumpet

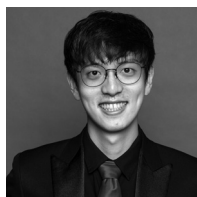
Photos by Matt Dine

CONGRATULATIONS TO OUR Musicians

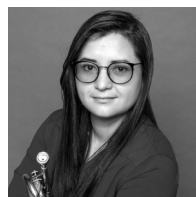
Musicians completing their Advanced Certificate in Performance Studies



Batmyagmar
Erdenebat *viola*

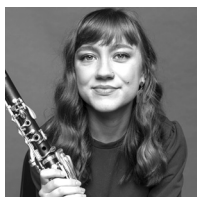


Felix Ko
percussion



Diana Lopez
trumpet

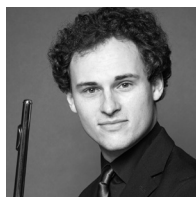
Musicians who have recently won positions in orchestras



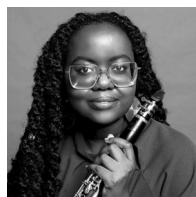
Mackenzie Austin
*United States Coast
Guard Band*



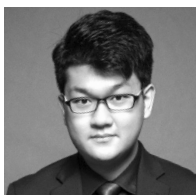
Celia Daggy
*Virginia
Symphony
Orchestra*



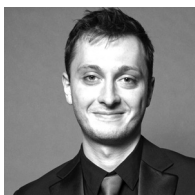
Brendan Dooley
*Opera
Philadelphia*



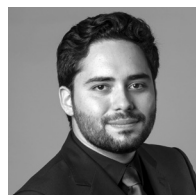
Olivia Hamilton
*United States
Army Band*



Zhen Liu
*Buffalo
Philharmonic
Orchestra*



Philip
McNaughton
*Glens Falls
Symphony*



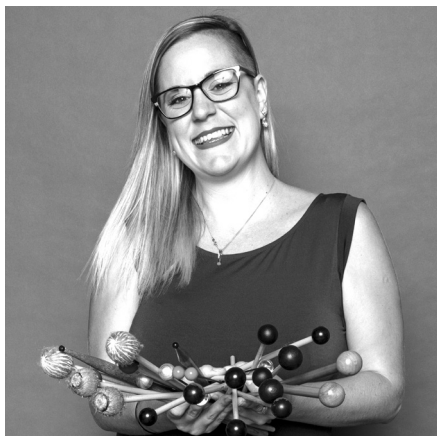
Leonardo Vásquez
Chacón
*Boston Symphony
Orchestra Resident
Fellow*

Photos by Matt Dine

MEET THE TŌN Musicians

PETRA ELEK *Percussion*

MATT DINE



Petra will talk briefly about the music on stage before the performances.

Hometown: Vásárosdombó, Hungary

Alma maters: Bard College Conservatory of Music, Advanced Performance Certificate, 2018–20; Bob Cole Conservatory of Music, California State University Long Beach, M.D., Percussion Performance, 2016–18; Bard College, B.M., Percussion Performance, B.A., German Studies, 2011–16

Awards/Competitions: 1st Place, 2017 College Solo Division at CA Percussive Arts Society Solo and Ensemble Competition; 1st Place, 2017 College Ensembles Division, as part of the University Percussion Group at Long Beach, at CA Percussive Arts Society Solo and Ensemble Competition

What do you think orchestra concerts should look like in the 21st century? I

think creating an environment for the audience that allows them to connect with us and have conversations with us are amazing steps in the right direction. A lot of people still feel like they're "not educated enough" or "don't know enough about classical music" in order to go to a concert. Breaking down that ideology, popularizing classical music, and engaging with the audience should be high priority in my opinion.

What has been your favorite experience as a musician? In my third year in college, the conservatory orchestra went on a tour to Europe and we were lucky enough to perform in the Liszt Academy in Hungary. I'll never forget the feeling of playing in my home country, in front of so many of my friends and family.

Tell us something about yourself that might surprise us: I originally had absolutely no intention of playing percussion. My dad has been the conductor of a wind band in Hungary for a long time, and when I was around 11 years old, they went on a tour to Poland. I told my parents that I was sick of staying at home and that I wanted to go with them. Since I knew how to read music, my dad suggested I "stand back there with those guys, they'll tell you what instrument you have to play . . ." I've been playing "back there" ever since.

Piece of advice for a young classical musician: Be patient, it's really worth it.

SUPPORT TŌN

WE'VE BROUGHT MUSIC TO MORE THAN 76,000 LIVE & VIRTUAL CONCERTGOERS IN OVER 200 CONCERTS THANKS TO SUPPORT FROM DONORS LIKE YOU!

INSPIRE GREATNESS!

Support TŌN's innovative training program for classical musicians.

THE TŌN FUND

Members of The Orchestra Now are completing an innovative graduate degree program. TŌN offers students the experiences they might expect as career orchestral musicians—including public performance, touring, and recording. TŌN is tuition free, and each student receives a yearly fellowship stipend. Individual contributions from music lovers like you are essential to TŌN's success.

SPONSOR A TŌN MUSICIAN: NAMED FELLOWSHIPS

Play a defining role in our success by sponsoring a TŌN musician. Direct your support to have a lasting impact on the education and training of TŌN's exceptional young players from around the world. TŌN offers both a three-year master's degree in Curatorial, Critical, and Performance Studies and a two-year advanced certificate in Orchestra Studies. *Named fellowships begin with a gift of \$10,000+ (Concertmaster's Circle).*

For detailed information on the many ways to support TŌN, please contact Nicole M. de Jesús, Director of Development, at 845.758.7988 or ndejesus@bard.edu.

There's simply no other music degree program like TŌN. Help us to inspire greatness by making a contribution today!

To Donate:

Visit TON.BARD.EDU/SUPPORT

Call 845.758.7988

THE TŌN FUND DONORS

The Orchestra Now gratefully acknowledges the generosity of each and every donor who makes our work possible. Ticket sales cover less than a quarter of the expenses for our concerts and educational initiatives. For detailed information on contributing to TŌN, or to update your listing, please contact Nicole M. de Jesús at ndejesus@bard.edu or 845.758.7988. Thank you for making this important investment in the future of classical music.

LEADERSHIP GIFTS

Estate of Clyde Talmadge Gatlin

Rockefeller Brothers Fund

Felicitas S. Thorne

THE YVONNE NADAUD MAI

CONCERTMASTER CHAIR

Made possible by The Mai Family Foundation

CONCERTMASTER'S CIRCLE

Joseph Baxer and Barbara

Bacewicz

Ingrid McHugh, in memory of

Paul E. McHugh

Michael Dorf Presents

Michael L. Privitera

Emily Sachar

CONDUCTOR'S BOX

Anonymous, in memory of Stuart

Stritzler-Levine

ALLEGRO

Alexandra Ottaway

FORTE

Anonymous

Charles Doran and Carissa

Escobar Doran

Gary Giardina

Steven Holl

Laurie S. Lauterbach

Robert Lonergan

The Merrill G. and Emita E.

Hastings Foundation

Christine T. Munson

James and Andrea Nelkin

Jennifer Shykula '96 and Thomas

Ochs

Richard D. Sime

Thom and Valerie Styron, in

honor of Jarrod Briley TŌN '22

Vivian Sukenik

David W. Welles

TRUMPETER

Anonymous (2)

Anne-Katrin Spiess Philanthropic

Fund at the Foundation for

Jewish Philanthropies

Mr. and Mrs. Ronald Atkins

Geri Brodsky

Marc and Margaret Cohen, in

honor of Colby Bond TŌN '25

Curtis DeVito and Dennis Wedlick

Vincent M. Dicks

Jan M. Guifarro

Michael J. Hall

Kassell Family Foundation of the

Jewish Communal Fund

Laurie and Michael Pollock Fund

of Fidelity Charitable

Tyler J. Lory and Michael

Rauschenberg

Barry Nalebuff and Helen Kauder

Maury Newburger Foundation

Northwestern Mutual Foundation

Janet Schoor

Lynda Schwab-Edmundson
The Stanley & Ethel Glen Family
Foundation
Alice Stroup, in memory of
Timothy Stroup

CRESCENDO

Nicole M. de Jesús '94 and Brian
P. Walker
Arnold* and Milly Feinsilber
Brian J. Heck
Elena and Frederic Howard
Scott Huang
George Jahn and Karen Kaczmar
Erica Kiesewetter
Bernard and Lisa S. King-Smith
Susan and Peter LeVangia
Janet C. Mills
Paul Oakley
Bruce and Blanche Rubin
Arlene and Gil Seligman
Jan and Jim Smyth
Judith Thoyer
Gene Vidal

TÖNOR

Naja R. Armstrong
Marvin Bielawski
James Blakney and Kelly A. Preyer
Diane and Ronald Blum
Dora Jeanette Canaday
Sara Cashen and Tony Muoser
Mark Churchill, in honor of
Emma Churchill TÖN '24
Joan Cohen
Richard and Hildegard '78 Edling
Peter and Charlene Gay
Howard and Caroline Goodman,
in honor of Lucas Goodman
TÖN '23
Lee Haring
William J. Harper
Stan Harrison
Stephen J. Hoffman
Hospitality Committee for United
Nations Delegations
Judith and Ron Goodman
Charitable Trust of Fidelity
Sherry and Tom Knowles
Miodrag Kukrika
Seth Lachterman
Deborah Hoffman Lanser
Drs. Nancy S. Leonard and
Lawrence Kramer
David L. Lewis
Erika Lieber
Nancy Lupton
Phyllis Marsteller
Warren R. Mikulka
Thomas C. Morrison
Stan and Bette Nitzky
Inez and Robert Parker, in honor
of David Kidd TÖN '22

Edith K. Payne
Lisa and Albrecht Pichler
Cathy and Fred Reinis
Ann and Thomas Robb, in honor
of Dillon Robb TÖN '21
Brigitte R. Roepke
Susan Seidel
Frances Sharpless
Frances Smyth
Georg Striedter
Joseph M. Sweeney
Fulvia Masi, in memory of
William R. Tanksley
Daniel Turk
Dana L. Vanderheyden
Howard N. Wallick
Ann and Douglas William
Drs. Julie and Sandy Zito

DOWNBEAT

Anonymous (2)
Norman Abrams
Frederick Allen and Erica De Mane
Philip Ardell
Jeffrey Berns
Stephanie Beroes
Marge and Ed Blaine
Kent Brown and Nat Thomas
Herbert and Sharon W. Burkland
Lydia Chapin
Joanne Chu
Thomas De Stefano
Priscilla Duskin
Janet and Robert Feldman
Renate L. Friedrichsen
Teresa Genin
Helena and Christopher H. Gibbs
Carol and Peter Goss
Gwen H. Gould and Ed Grossman
Tamara Judith Gruzko
Karen and Perry Hoag, in honor
of Katelyn Hoag TÖN '21 and
Bram Margoles TÖN '21
Malcolm G. Idelson
Laura Johnson and Paul F. Salerno
Steven Jonas, M.D.
Bob and Vickie Kampf
Arthur S. Leonard
Edward W. Leavitt
Catherine and Jacques Luiggi
Willa Lewis and Edward Moulin
Eugene Lowenkopf
Nina Lynch
Karen Manchester
Virginia M. and Guenther W. May
Jane Meisel
David Mellins
Martin and Lucy Murray
Gary Morgan
Ken and Lindsay Morgan
Andrew Penkalo
Shirley Perle
Carole A. Pickering

Denise T. Pitcher
Bobbie Post
Nora Post
Richard Rizzo and Endid Ain
Edward Sandfort*
Bonnie S. Sgarro
Thomas Shykula
Shari J. Siegel
Peter Sipperley
Theodore J. Smith
William Solis
Susan Stempleski
Elizabeth Strianese
Phyllis Tuchman
George Wachtel
George R. Walter
Michael and Leslie Weinstock
Elizabeth Willis, in memory of
Elliot Magaziner
Jo Winograd
Lynda Youmans, in honor of
Drew Youmans TÖN '19

PRELUDE

Anonymous (2)
Leslie and Louis Baker
Laurence Blau and Karen Johnsen
Donald Bourque
Marie-Louise Brauch
Renée Burgevin
Harriet Bussel
Carole L. and Vincent
Cappadocia
Harriet D. Casbie
Marsha S. Clark
James Costello
Walter Czajka
Dena Fisher
Nancy Hereford
Brenda Klein
Barbara Komansky
Marilyn Lebowitz
Martha V. Lyon
Sandra Novick
Kathleen G. Overbay
Michael P. Pillot
Eileen Quinlan
Robert Renbeck
Joan W. Roth
Barbara Shrager
Diane J. Scrima
Anna Shuster
Jenny Snider
Judith Winzemer

**Deceased*

*This list represents gifts made to
The Orchestra Now from July
1, 2021 to April 19, 2023.*

Thank you for your partnership!

THE ADMINISTRATION

THE ORCHESTRA NOW

Artistic Staff

Leon Botstein *Music Director*
James Bagwell *Associate Conductor and Academic Director*
Jindong Cai *Associate Conductor*
Zachary Schwartzman *Resident Conductor*
Andrés Rivas GCP '17 *Assistant Conductor*
Erica Kiesewetter *Director of Orchestral Studies*
Keisuke Ikuma *Artistic Coordinator of Chamber Music*
Sima Mitchell *First Year Seminar Faculty*

Marketing & Development Staff

Brian J. Heck *Director of Marketing*
Nicole M. de Jesús '94 *Director of Development*

Concert Crew

Lauryn Schaffer *Stage Manager*

Administrative Staff

Kristin Roca *Executive Director*
Marielle Metivier *Orchestra Manager*
Viktor Tóth '16 TÖN '21 *Eastern/Central European Music Curator and Assistant Orchestra Manager*
Matt Walley TÖN '19 *Program Coordinator and Admissions*
Sebastian Danila *Music Preparer and Researcher*
Benjamin Oatmen *Librarian*
Leonardo Pineda '15 TÖN '19 *Director of Youth Music Education*

BARD COLLEGE

BOARD OF TRUSTEES

James C. Chambers '81 *Chair*
Emily H. Fisher *Vice Chair*
Brandon Weber '97 *Vice Chair*
Elizabeth Ely '65 *Secretary; Life Trustee*
Stanley A. Reichel '65 *Treasurer; Life Trustee*
Fiona Angelini
Roland J. Augustine
Leonard Benardo
Leon Botstein *President of the College, ex officio*
Mark E. Brossman
Jinqing Cai
Marcelle Clements '69 *Life Trustee*
The Rt. Rev. Andrew M. L. Dietsche *Honorary Trustee*
Asher B. Edelman '61 *Life Trustee*
Kimberly Marteau Emerson
Robert S. Epstein '63
Barbara S. Grossman '73 *Alumni/ae Trustee*
Andrew S. Gundlach
Matina S. Horner *ex officio*

Charles S. Johnson III '70
Mark N. Kaplan *Life Trustee*
George A. Kellner
Mark Malloch-Brown
Fredric S. Maxik '86
Jo Frances Meyer *ex officio*
Juliet Morrison '03
James H. Ottaway Jr. *Life Trustee*
Hilary Pennington
Martin Peretz *Life Trustee*
Stewart Resnick *Life Trustee*
David E. Schwab II '52 *Life Trustee*
Roger N. Scotland '93 *Alumni/ae Trustee*
Annabelle Selldorf
Mostafiz ShahMohammed '97
Jonathan Slone '84
Geoffrey W. Smith
Alexander Soros
James von Klemperer
Susan Weber
Patricia Ross Weis '52

UPCOMING TÖN EVENTS

Sunday, May 14, 2023, at 4 p.m.

FREE CONCERT ON THE UPPER WEST SIDE: *THE SORCERER'S APPRENTICE*

TÖN wraps up its eighth season of free concerts with a performance at Peter Norton Symphony Space. Resident Conductor Zachary Schwartzman leads the orchestra in a program that includes Messiaen's sentimental and spiritual song cycle *Poèmes pour Mi*, Dukas' ever-popular symphonic poem *The Sorcerer's Apprentice*, and Rimsky-Korsakov's masterful *Scheherazade*.

Zachary Schwartzman *conductor*
Katherine Lerner Lee VAP '23 *soprano*

Paul Dukas *The Sorcerer's Apprentice*
Olivier Messiaen *Poèmes pour Mi*
Rimsky-Korsakov *Scheherazade*

Sunday, May 21, 2023, at 3 p.m.

at Rose Theater at Jazz at Lincoln Center's Frederick P. Rose Hall
TAN DUN CONDUCTS "AN AFTERNOON AT THE AVIARY"

Grammy and Academy Award-winning composer and conductor Tan Dun returns to Jazz at Lincoln Center's Rose Theater to lead TÖN in *An Afternoon at the Aviary*, a bird-themed program that includes his own *Passacaglia: Secret of Wind and Birds* and Stravinsky's distinctive *Firebird Suite*.

Tan Dun *conductor*
Yida An IAP '24 *violin*
Milad Daniari TÖN '18 *bass*

Grigoraş Dinicu *Ciocârlia (The Lark)*
Tan Dun *Contrabass Concerto: Wolf Totem*
Tan Dun *Passacaglia: Secret of Wind and Birds*
Stravinsky *The Firebird Suite*

More information available at TON.BARD.EDU.